

KIRCHNER & MARES

International Yacht Brokerage

Hamburg • Kiel

SWAN 45 „SWANDERFUL“



Year built: 2002

Asking Euro: 275.000,-

VAT status: paid

Engine: VOLVO- PENTA D2-55
39 kW / 53 HP, Saildrive

Layout: 2 cabins, 4 sleeps/ 2 heads

Engine hours: ca. 3.500 h

Length: 13,83 m

Beam: 3,92 m

Draft: 2,88 m

Displacement: 9.500 kg

Freshwater: 320 ltr

Holding tank: 60 ltr

Diesel: 150 ltr

Lying: Italy, Adriatic

The Swan 45 "SWANDERFUL" - from the renowned Finnish shipyard Nautor Swan is one of the most successful sailing yachts in the Swan 45 one-design class. Nautor's concept envisages that the Swan 45 is ideal for cruising as well as for successful regatta sailing. The balanced sailing behavior in combination with a typical high-quality Swan interior design invites you to cruise. The performance of the yacht in combination with high-performance sails, carbon fiber rig and high-quality deck fittings guarantee that the Swan 45 under ORC | IRC is one of the most competitive yachts in regatta sport. For the last two German owners, the yacht was maintained by Swan Italy. The yacht is in ready-to-go condition, all service work for 2023 has been carried out and investments have also been made in value retention. For sailors who are looking for a high-quality yacht with the best sailing characteristics, we recommend an inspection. Exclusively for sale at Kirchner & Mares - broker authorized by the **German owner**.

KIRCHNER & MARES

International Yacht Brokerage

Hamburg • Kiel

Hull, deck and rigging:

- HIN No.: FI-SWN45006A203
- Hull-number: #45|006
- Yacht designer: German Frers
- CE category: "A" - Ocean
- Hull colour: White with the typical Swan decorative stripes in black
- Version: 2 cabins and a large locker to starboard
- Hull material: Glass / Vinylester laminated with carbon reinforcements - no damage
- Engine: Completely overhauled in 2016
- Teak deck: Completely new teak deck 2017 from Swan Italy

- HALL SPARS carbon mast with two spreaders - newly painted (matt black) and fully serviced by HALL SPARS for the 2017 season
- HALL SPARS Carbon Boom - Repainted 2017, matt black
- Carbon spinnaker boom
- Furling system with separate forestay
- German- Main sheet system & all LEWMAR Ocean Series winches
- Main sheet winch 50 STOR 2 speed & genoa winches 55 STOR 3 speed
- Halyard winches 50 STOR 2-speed one electric from 2012
- SPINLOCK fall arrester | Jammer- New 2012
- Halyards and sheets from GLEISTEIN Dyneema New for the 2017 season
- NAVTEC A 320-MF-02, 2-way hydraulic for backstay and boom vang - full service 2017

Electronics and navigation:

- 12 V DC on-board power supply
- 2x solar panel SUNWARE TX 12039 38 Wp, portable
- MASS 12/80 automatic charger
- LOPOLIGHT LED navigation lights
- 2x 6 V gel batteries (service) from MASTERVOLT AGM 400 Ah - New 2017
- 1x 12 V OPTIMA AGM 50 Ah starter battery New 2022
- 2x alternators 130 Ah and 60 Ah & inverter 12 V / 1,200 A & shore power 230 V | 25A outlets - operate from the inverter or shore power
- 220 V hot water system with 25 l boiler
- B & G HYDRA NAV instruments with mast bracket for the jumbos
- HALOGEN 2000 fluxgate compass & 1x SUUNTO compass at helm station
- RAYMARINE GPS chart plotter with W-LAN function for the iPad
- RAYMARINE AIS 650 transmitter and receiver
- 1x B&G Hercules 2000 FFD in Cockpit & 1x B&G Pilot FFD in Cockpit New
- 2x B&G analogue wind displays in the cockpit
- VHF ICOM IC-M503 with DSC & VHF antenna in masthead

KIRCHNER & MARES

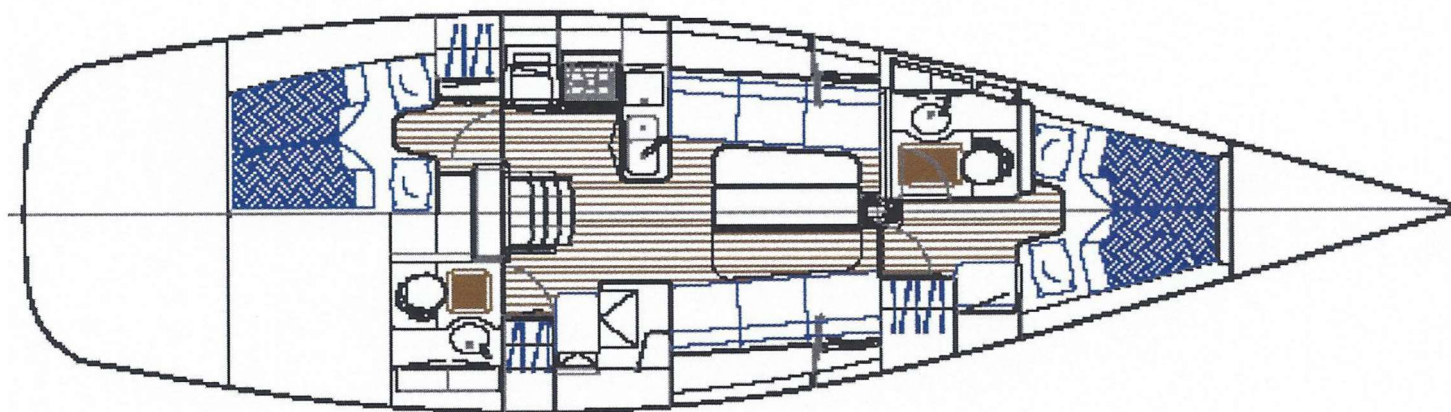
International Yacht Brokerage

Hamburg • Kiel

Additional equipment:

- Mainsail, Technora, 2 reefs, tuff on both sides - from 2016
- New Furling Genoa, 110% from Blue Sails- New 2022
- Code 0, 120 sqm from 2017
- Gennaker including hose - from 2015
- Fixed bowsprit for Code 0 and for the anchor - New 2017
- Furling genoa cover
- Lazy- Jack + bag system with awning
- Bimini
- Interior upholstery and mattresses - from 2015
- 2x refrigerator from SOFTTHERM 12 V (60 l and 70 l)
- Radio/CD SONY - New 2014 with speakers in saloon and two in cockpit (waterproof)
- 3-blade folding propeller Volvo Penta cruising – from 2014
- 2-blade folding propeller racing
- VERSARI DELMONTE pop-up cleats, 2x. aft and 1x at the bow
- Swimming ladder
- Bearing block matched to the SWAN 45
- Cockpit cushions
- Anchor with chain
- Electric anchor windlass with remote control
- Gangway
- Full tonneau cover and deck cover
- 2x WC Jabsco
- Pressure water pump from 2017
- Interior lighting New 2016
- Erwin Sattler ship's clock and barometer
- Inflatable dinghy with electric motor

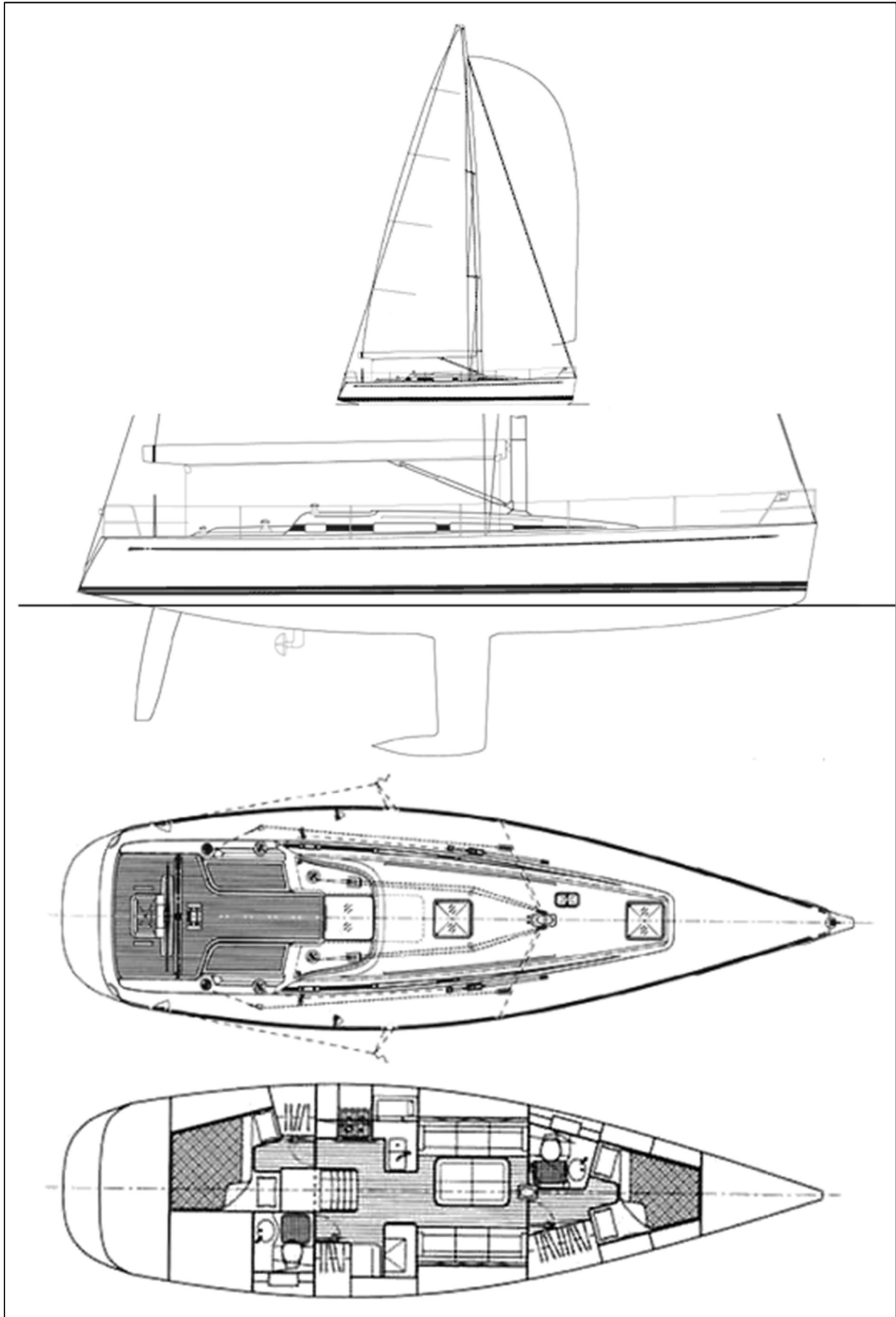
Layout Drawing



KIRCHNER & MARES

International Yacht Brokerage

Hamburg • Kiel



KIRCHNER & MARES

International Yacht Brokerage

Hamburg • Kiel



KIRCHNER & MARES

International Yacht Brokerage

Hamburg • Kiel



KIRCHNER & MARES

International Yacht Brokerage

Hamburg • Kiel



KIRCHNER & MARES

— International Yacht Brokerage —
Hamburg • Kiel



KIRCHNER & MARES

International Yacht Brokerage

Hamburg • Kiel



KIRCHNER & MARES

International Yacht Brokerage

Hamburg • Kiel



KIRCHNER & MARES

International Yacht Brokerage

Hamburg • Kiel



KIRCHNER & MARES

International Yacht Brokerage

Hamburg • Kiel



KIRCHNER & MARES

International Yacht Brokerage

Hamburg • Kiel



KIRCHNER & MARES

— International Yacht Brokerage —
Hamburg • Kiel



KIRCHNER & MARES

— International Yacht Brokerage —

Hamburg • Kiel



KIRCHNER & MARES

— International Yacht Brokerage —

Hamburg • Kiel



KIRCHNER & MARES

— International Yacht Brokerage —

Hamburg • Kiel



KIRCHNER & MARES

International Yacht Brokerage

Hamburg • Kiel



Bilder mit altem Teakdeck



KIRCHNER & MARES

— International Yacht Brokerage —
Hamburg • Kiel



KIRCHNER & MARES

— International Yacht Brokerage —
Hamburg • Kiel



KIRCHNER & MARES

— International Yacht Brokerage —
Hamburg • Kiel



KIRCHNER & MARES

— International Yacht Brokerage —
Hamburg • Kiel



KIRCHNER & MARES

International Yacht Brokerage
Hamburg • Kiel



KIRCHNER & MARES

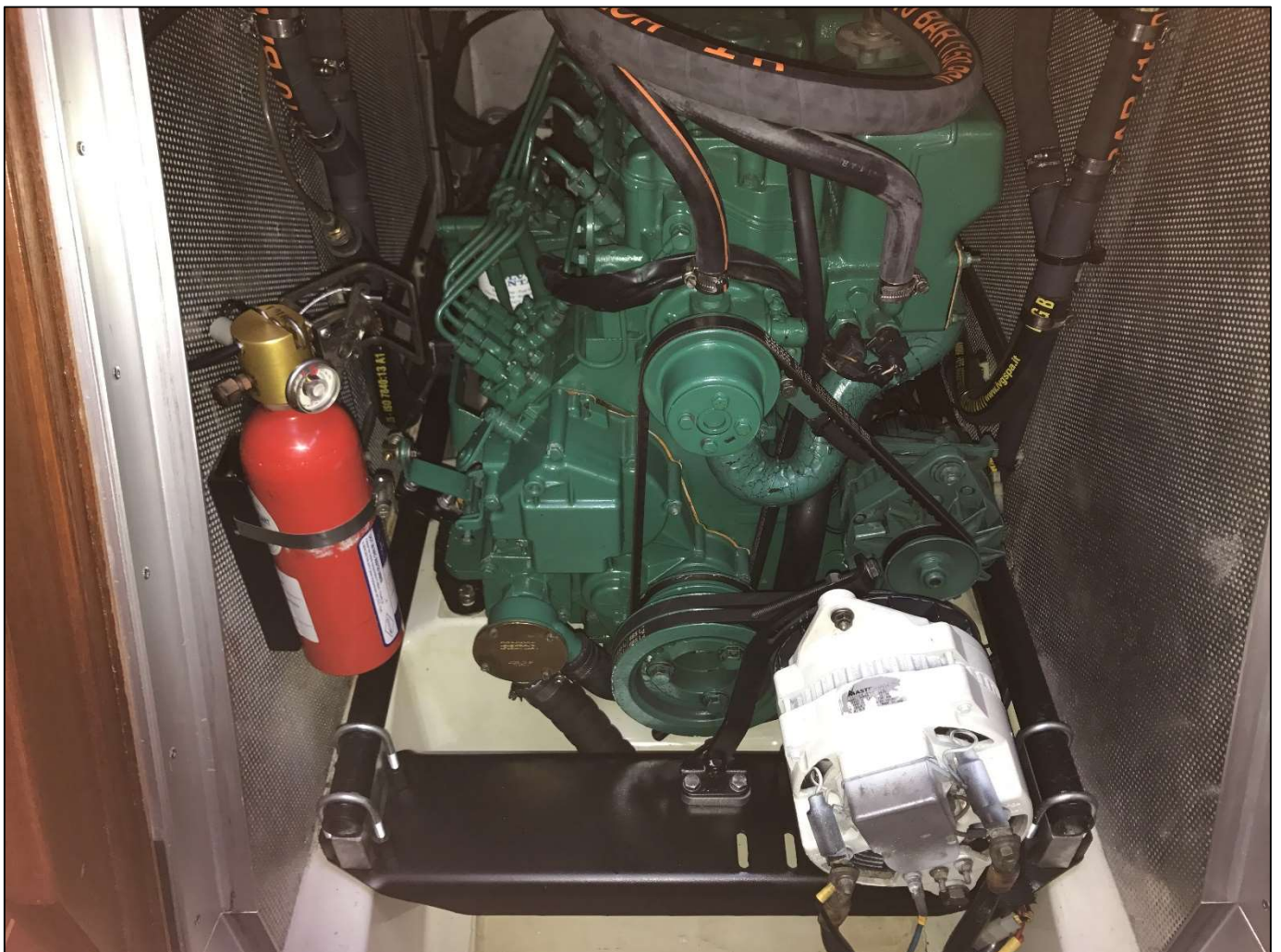
International Yacht Brokerage
Hamburg • Kiel



KIRCHNER & MARES

International Yacht Brokerage

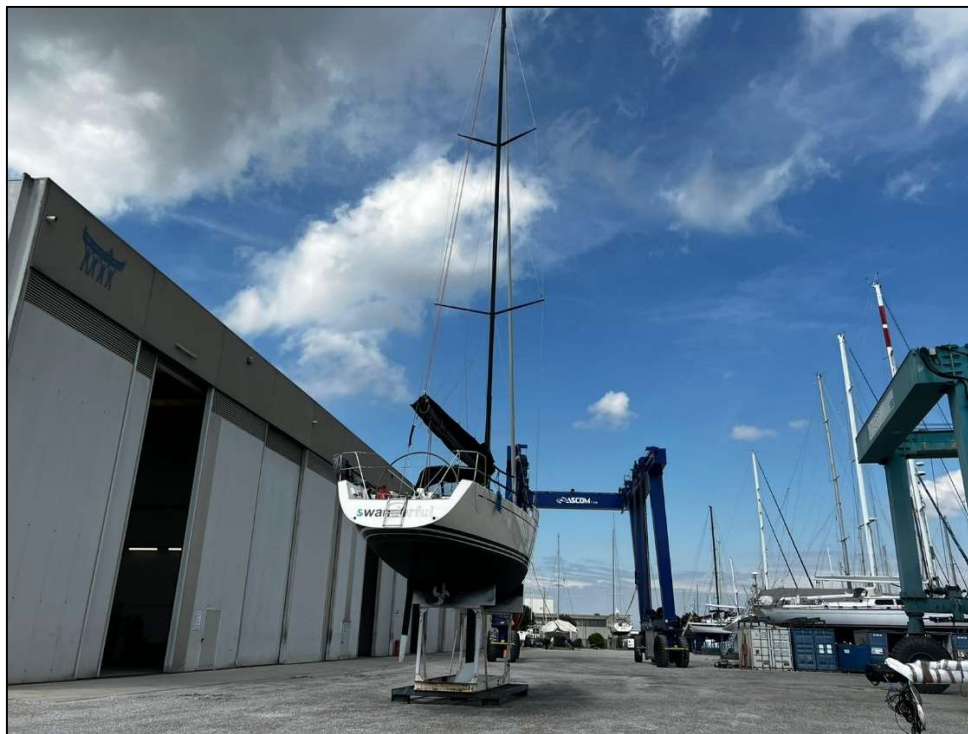
Hamburg • Kiel



KIRCHNER & MARES

International Yacht Brokerage

Hamburg • Kiel



Subject to errors, prior sale, price changes and changes to the equipment list and specification. Information on dimensions, equipment or VAT are shipyard information or taken over by the owner without being checked. We assume no liability for deviations.

OFFICE KIEL

Erlenweg 16 | 24229 Dänischenhagen
Fon: +49(0)4349-91 99 30
Fax: +49(0)4349-91 99 40
mares@kirchner-mares.com

OFFICE HAMBURG

Rödingsmarkt 39 | 20459 Hamburg
Fon: +(0)40- 605 631 86
Fax: +(0)40- 180 636 92
kirchner@kirchner-mares.com

KIRCHNER & MARES INT. YACHT BROKERAGE OHG

Handelsregister Kiel HRA 7038 | USt-IdNr. DE27 1597 101
Hamburger Sparkasse
Kto. 12 80 36 54 77 | BLZ 200 505 50
info@kirchner-mares.com