

KIRCHNER & MARES

International Yacht Brokerage

Hamburg • Kiel

Contrast 400



Year build: 1996

Asking Euro: 95.000,-

VAT status: paid/incl.

Engine: Volvo Penta MD 2040 B
32 kW / 43 hp, Saildrive

Layout: 3 cabins, 6 beds/ 2 heads

Engine hours: 3.975 h

Length: 12,40 m

Beam: 3,70 m

Draft: 2,05 m

Displacement: ca. 7.500 kg

Freshwater: 360 l

Holding tank: 105 l

Fuel: 130 l

Lying: North Germany

This fine Contrast 400 is technically and visually in good condition. Regular investments were made to maintain the value of the yacht. In addition to good sailing characteristics, the high-quality workmanship and the very beautiful interior design of the sailing yacht should be mentioned. Thanks to the furling mast and the cockpit design, the Contrast can be sailed safely by even the smallest crew. Built in Sweden to high quality. Exclusively for sale at Kirchner & Mares – broker authorized by the owner.

KIRCHNER & MARES

International Yacht Brokerage

Hamburg • Kiel

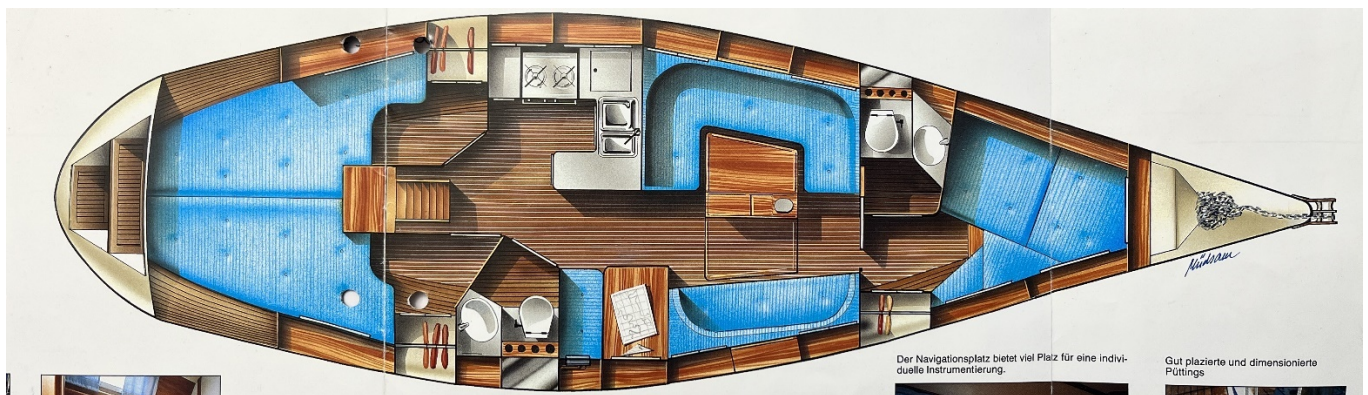
Equipment:

- Desig: Rolf Magnusen | Shipyard: Contrast Marine Sweden
- Ballast: 3,000 kg | Lead keel
- 3- cabins with a total of 6 berths and two more in the saloon
- Teak in the cockpit, side decks, foredeck and on the deck structure
- Interior in mahogany, satin matt with lots of storage and shelf space
- The underwater hull was sanded and rebuilt by the Wrede shipyard about 8 years ago
- The engine was completely overhauled in 2021/2022
- Saildrive cuff new in 2021 | 3-blade folding propeller
- Hull speed: 7.5 kn | Deep bilge and skeg
- Stainless steel tanks
- Very large anchor locker and large lockers in the cockpit
- Pressurized water system h/k
- diesel heating
- Gas stove with 3 burners and oven
- 2x stainless steel sink & electric refrigerator
- EDSON steering pedestal, control cables and compass new in 2022
- 2x LEWMAR self-tailing genoa winches ST54
- 2x LEWMAR self-tailing halyard winches ST40
- 2x LEWMAR self-tailing gennaker winches ST40
- Line-adjustable genoa sheet points
- Stainless steel gennaker boom new 2021
- Furling mast
- 1x mainsail for rolling, all halyards steered into the cockpit
- 1x furling genoa and 1x strum jib
- 1x gennaker
- Sprayhood new 2022 (old one is also still there)
- Cockpit tent new in 2018
- Stainless steel anchor with stainless steel chain
- Solid amidships cleats
- Fenders and mooring lines

Electronics and navigation:

- 1x separate starter battery
- 2x service battery
- Solar panel with charger
- Shore connection with shore connection cable
- FI switch
- Automatic battery charger 12 V/30 Amp from Yachttronik
- 220V sockets

- RAYMARINE autopilot ACU- 200 new 2020 (control panel and electrical components)
- Autopilot mechanical unit is from 2016/2017
- RAYMARINE GPS chart plotter new 2019/2020
- RAYMARINE ST 60, navigation instruments: multi-display | 2x wind magnifier and rudder position sensor
- RAYMARINE chart plotter on the steering pedestal
- VHF radio from Northstar NS 100
- FM radio with speakers (indoor and outdoor)



KIRCHNER & MARES

International Yacht Brokerage

Hamburg • Kiel



KIRCHNER & MARES

International Yacht Brokerage

Hamburg • Kiel



KIRCHNER & MARES

— International Yacht Brokerage —
Hamburg • Kiel



KIRCHNER & MARES

International Yacht Brokerage

Hamburg • Kiel



KIRCHNER & MARES

International Yacht Brokerage

Hamburg • Kiel



KIRCHNER & MARES

— International Yacht Brokerage —
Hamburg • Kiel



KIRCHNER & MARES

International Yacht Brokerage
Hamburg • Kiel



KIRCHNER & MARES

— International Yacht Brokerage —
Hamburg • Kiel



KIRCHNER & MARES

— International Yacht Brokerage —
Hamburg • Kiel



KIRCHNER & MARES

— International Yacht Brokerage —
Hamburg • Kiel



KIRCHNER & MARES

— International Yacht Brokerage —
Hamburg • Kiel



KIRCHNER & MARES

— International Yacht Brokerage —
Hamburg • Kiel



KIRCHNER & MARES

— International Yacht Brokerage —
Hamburg • Kiel



KIRCHNER & MARES

— International Yacht Brokerage —
Hamburg • Kiel



KIRCHNER & MARES

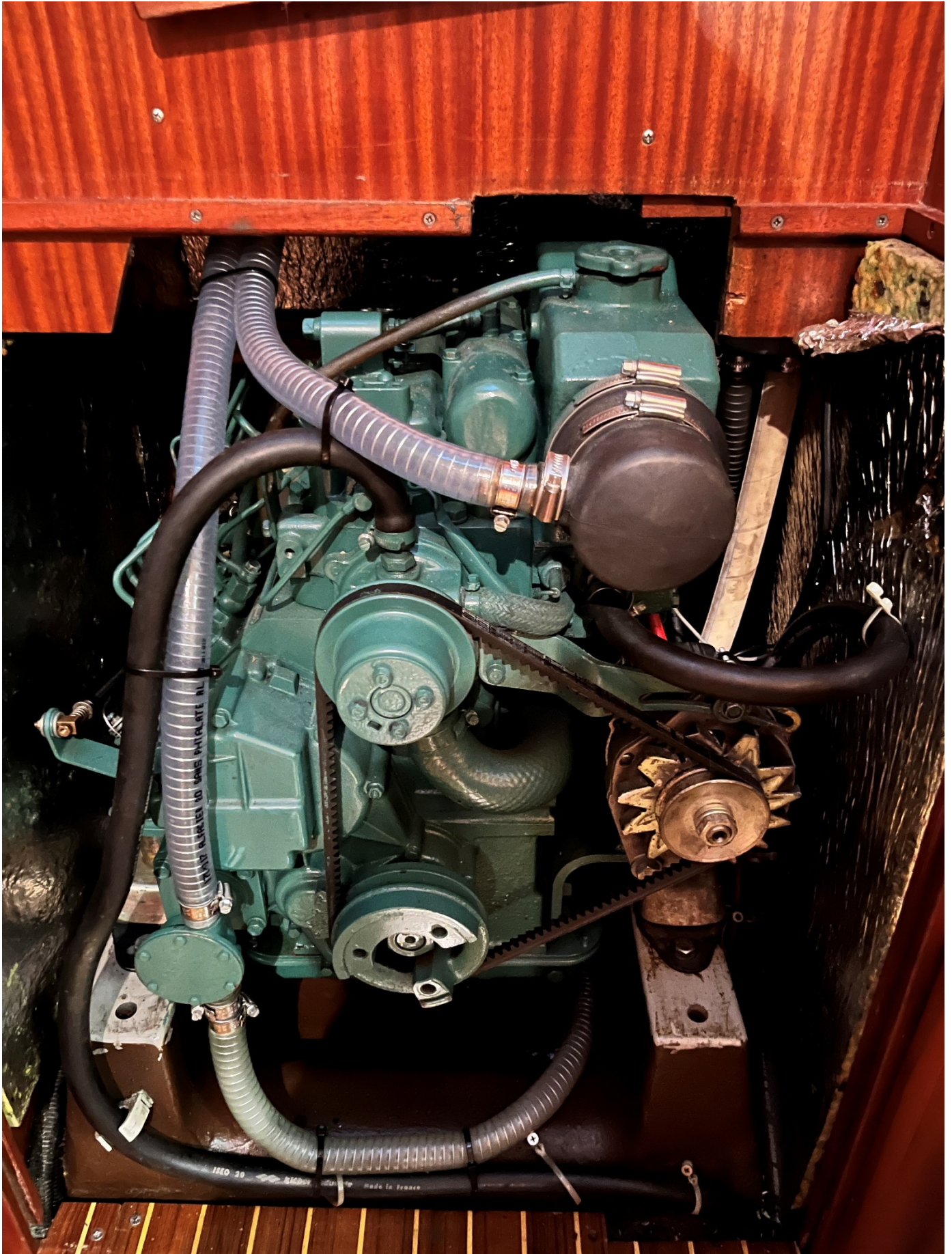
— International Yacht Brokerage —
Hamburg • Kiel



KIRCHNER & MARES

— International Yacht Brokerage —

Hamburg • Kiel



KIRCHNER & MARES

— International Yacht Brokerage —
Hamburg • Kiel



KIRCHNER & MARES

— International Yacht Brokerage —
Hamburg • Kiel



Irrtümer, Zwischenverkauf, Preisänderungen und Änderungen an der Ausrüstungsliste- sowie an der Spezifikation vorbehalten. Angaben zu Abmessungen, Ausrüstung oder Mehrwertsteuer sind z.T. Wertangaben oder vom Eigner ungeprüft übernommen. Für Abweichungen übernehmen wir keine Gewähr.

OFFICE KIEL

Erlenweg 16 | 24229 Dänischenhagen
Fon: +49(0)4349-91 99 30
Fax: +49(0)4349-91 99 40
mares@kirchner-mares.com

OFFICE HAMBURG

Große Bleichen 21 | 20354 Hamburg
Fon: +(0)40- 60 56 31 86
Fax: +(0)40- 180 636 92
kirchner@kirchner-mares.com

KIRCHNER & MARES INT. YACHT BROKERAGE OHG

Handelsregister Kiel HRA 7038
USt-IdNr. DE27 1597 101
info@kirchner-mares.com
www.kirchner-mares.com