

KIRCHNER & MARES

International Yacht Brokerage

Hamburg • Kiel

Contest 52MC Flybrige



Year: 2020

Asking Euro: 1.495.000,-

VAT status: paid/incl.

Engines: 2x Cummins | 6 cyl. turbo MD
2 x 550 hp, shaft drive

Layout: 3 cabins, 6 beds/ 2 heads

Engine hours: ca. 880 h

Length: 15,93 m

Beam: 4,60 m

Draft: 0,85 m

Displacement: 20.000 kg

Freshwater: 700 ltr

Flag/register: German

Fuel: 1.800 ltr

Lying: Netherlands

This fantastic Contest 52MC Fly is technically and visually in very good condition. First owner. Contest yachts stand for the highest quality boat construction and the use of the finest materials and technical components. Our Contest 52MC Fly impresses with its excellent driving characteristics, especially in rough water thanks to the Seakeeper Gyro stabilizer. The very extensive and high-quality equipment is worth mentioning. We recommend a viewing for those interested in an individual, luxurious motor yacht with very attractive hull lines. Exclusively for sale at Kirchner & Mares – broker authorized by the German owner.

Various information :

- LwL: 14.60 m
- Air draft from waterline: 3.74 m
- Maximum speed: approx. 22 kn | Cruising: ca. 10 kn
- Hull is built in vacuum injection process
- CE category A
- Flybrige with second control position
- Cummins joystick docking system for easy docking and maneuvering in port at the helm and on the flybridge
- The stern thruster and the bow thruster are synchronized with the docking system joystick
- Dockmate, remote control
- Bennet trim tabs SST 14x 16 dual actuator at the rear
- Seakeeper Gyro driving stabilizer, effectively counteracts the rolling movements of the motorboat, when underway and at anchor

- Hull painting with ALEXSEAL in Majestic Blue
- Teak on the side decks, sundeck, flybridge, cockpit and bathing platform
- Larger bathing platform 1.38 m

- High-quality interior design in teak
- Floor surfaces in teak, extra wide joints or carpet
- Corian work surfaces in the pantry, white
- Corian surfaces in the bathrooms, white
- Slatted frames for the owner's double berth
- Roller blinds for the deck hatches
- Dimmer function for the lighting in the salon
- LED ceiling lights
- Various indirect lighting systems using LED strips
- Reading lights in owner's cabin

- Washing machine with dryer function
- Refrigerator (front loader) 130 l
- Refrigerator on the nav seat
- Bar with fridge on the Flybrige
- 4-zone induction cooker in the pantry
- 2-zone induction cooker on the Flybrige

- WEBASTO diesel heating and extra air conditioning (expansion chiller)

- Electric toilets
- Salon sofa upholstery: UF Brisa, original bone
- Cockpit upholstery: SUNBRELLA Natte 101 Graumel Chalk
- Large cockpit table

Electronics and navigation:

- 3 x 24V/ 200 Ah MASTERVOLT MLI Ultra Lithium batteries for service, new 09.2021
- 1 x 24V/ 200 Ah MASTERVOLT MLI Ultra Lithium battery for the stern thruster

- Conversion of the alternator as a full charging source, in 09.2021
- MASTERVOLT Mac Plus DC/DC converter, charger 24/24-30

- 5 x 230V sockets
- 2 x 230V extra sockets in the dingy garage

- 1 x 12V socket in the dinghy garage
- 1 x 12V socket on the inside control station
- 1 x 12V socket on the outside control station (Flybrige)

- Extra USB ports on each bunk

- Generator 11.0 kW | 230V AC
- 2 x shore power connections

- SIMRAD FU80 autopilot controller
- SIMRAD Precision-9 compass
- SIMRAD NAC-3 autopilot computer
- SIMRAD OP12 pilot controller on the Flybrige
- SIMRAD DTS800 Log | Lot | Water temperature displays
- SIMMRAD GS25 GPS
- SIMRAD AIS transceiver (Class B)
- SIMRAD VHF RS90 DSC (ClassD) station
- SIMRAD VHF HS35 DSC (Class D) wireless station
- SIMRAD chart plotter NSS 12" evo3 on the Flybrige
- 2 x glassbridge multidisplays 15" with SIMRAD EVO-2 on the inside control station
- SIMRAD digital radar HALO20+
- SIMRAD rear view camera

- Wind instrument
- Foghorn air on the signal mast

- Satellite TV KVH TracVision TV5 with LMB controller
- TV in owner's cabin
- TV 32" in the saloon

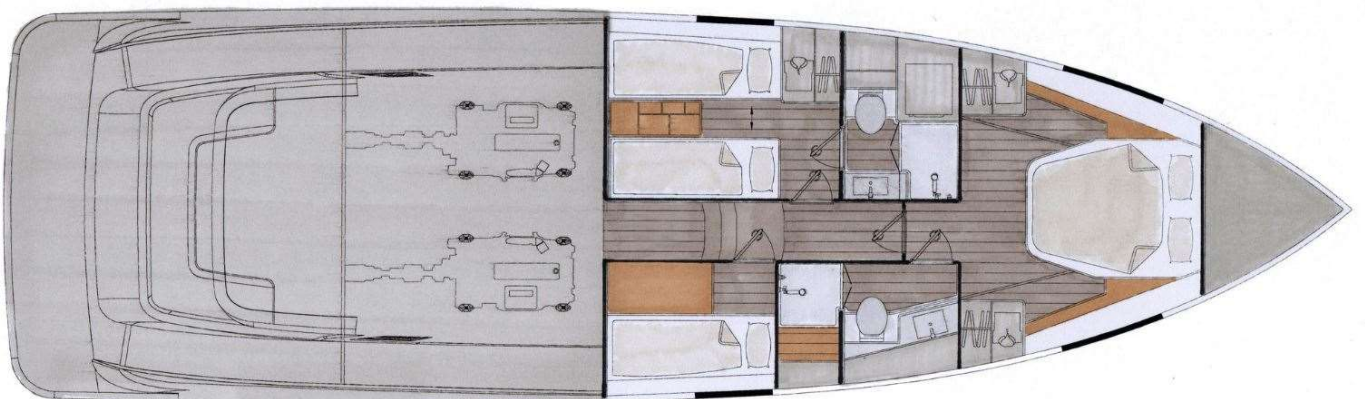
KIRCHNER & MARES

International Yacht Brokerage

Hamburg • Kiel

Equipment:

- Automatic fire extinguishing system in the engine room
- Cockpit covers for closing the cockpit with removable side panels and a stainless steel frame
- Large bimini top for the Flybrige with a solid stainless steel frame
- Cover for the cockpit table
- Cover for the outside control station
- Dinghy bearing block in the dinghy garage
- Semi-automatic anchoring system with a 20 kg delta anchor
- Preparation for a stern anchor
- Deck wash pump (midships), sea water
- Deck wash pump (aft), fresh water
- Shower in the aft, fresh water (warm/ cold)
- FUSION radio with 2x speakers in the saloon, cockpit and on the flybrige



KIRCHNER & MARES

International Yacht Brokerage

Hamburg • Kiel



KIRCHNER & MARES

International Yacht Brokerage

Hamburg • Kiel



KIRCHNER & MARES

— International Yacht Brokerage —
Hamburg • Kiel



KIRCHNER & MARES

— International Yacht Brokerage —
Hamburg • Kiel



KIRCHNER & MARES

— International Yacht Brokerage —
Hamburg • Kiel



KIRCHNER & MARES

— International Yacht Brokerage —
Hamburg • Kiel



KIRCHNER & MARES

International Yacht Brokerage
Hamburg • Kiel



KIRCHNER & MARES

International Yacht Brokerage
Hamburg • Kiel



KIRCHNER & MARES

International Yacht Brokerage
Hamburg • Kiel



KIRCHNER & MARES

International Yacht Brokerage
Hamburg • Kiel



KIRCHNER & MARES

International Yacht Brokerage

Hamburg • Kiel



KIRCHNER & MARES

International Yacht Brokerage
Hamburg • Kiel



KIRCHNER & MARES

International Yacht Brokerage

Hamburg • Kiel



KIRCHNER & MARES

— International Yacht Brokerage —
Hamburg • Kiel



KIRCHNER & MARES

— International Yacht Brokerage —
Hamburg • Kiel



KIRCHNER & MARES

International Yacht Brokerage
Hamburg • Kiel



KIRCHNER & MARES

International Yacht Brokerage
Hamburg • Kiel



KIRCHNER & MARES

— International Yacht Brokerage —
Hamburg • Kiel



KIRCHNER & MARES

— International Yacht Brokerage —
Hamburg • Kiel



KIRCHNER & MARES

International Yacht Brokerage
Hamburg • Kiel



KIRCHNER & MARES

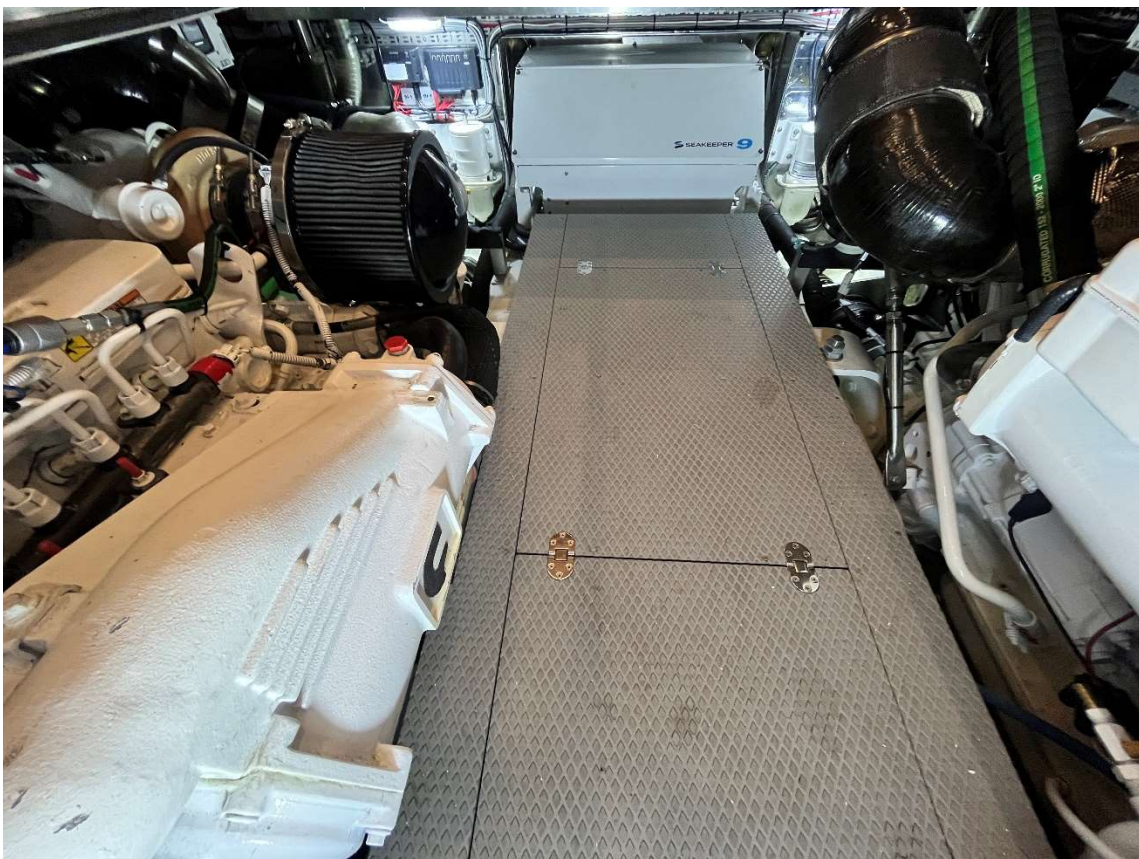
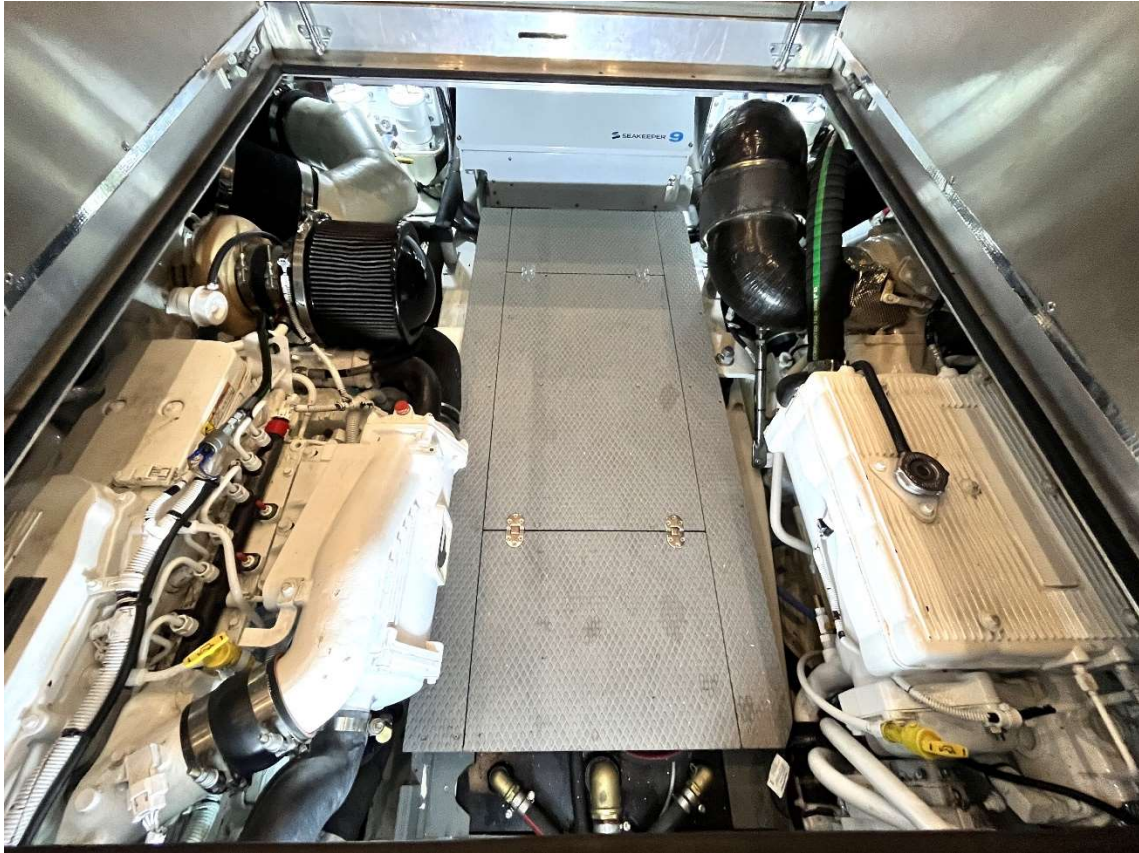
— International Yacht Brokerage —

Hamburg • Kiel



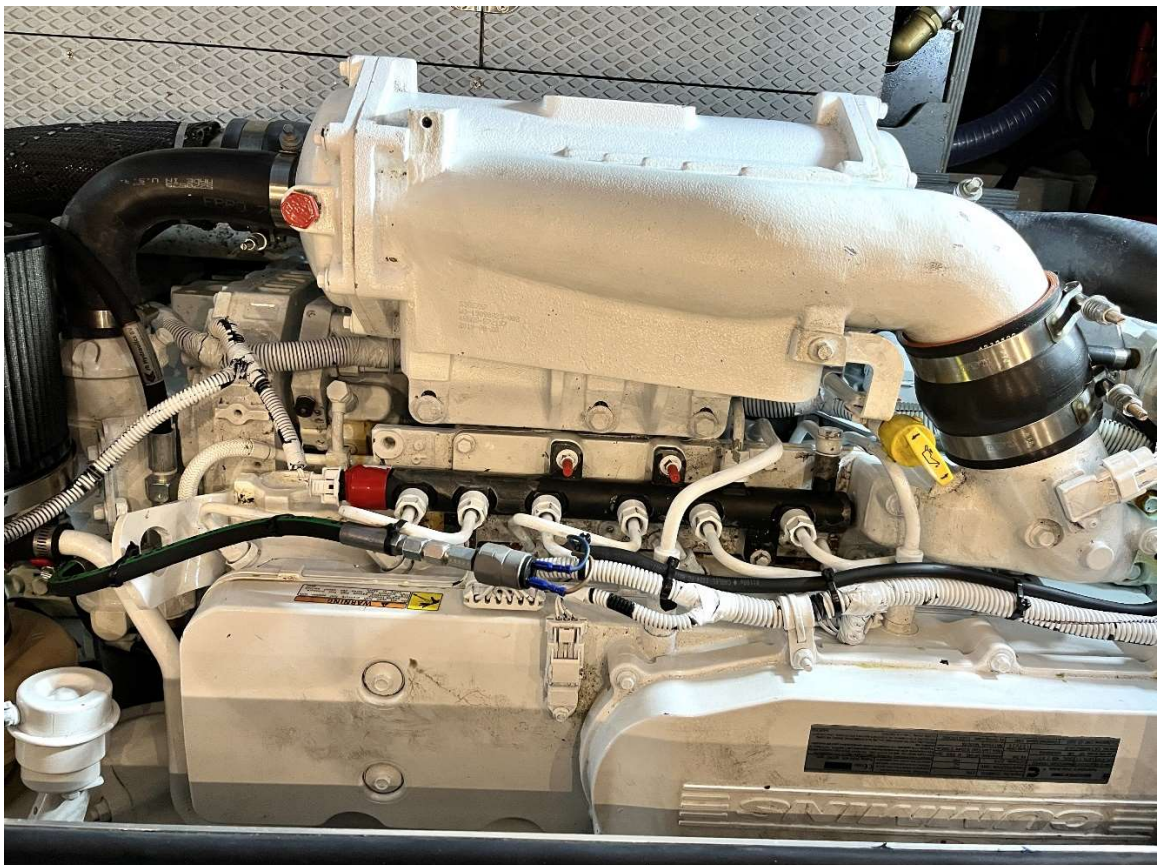
KIRCHNER & MARES

— International Yacht Brokerage —
Hamburg • Kiel



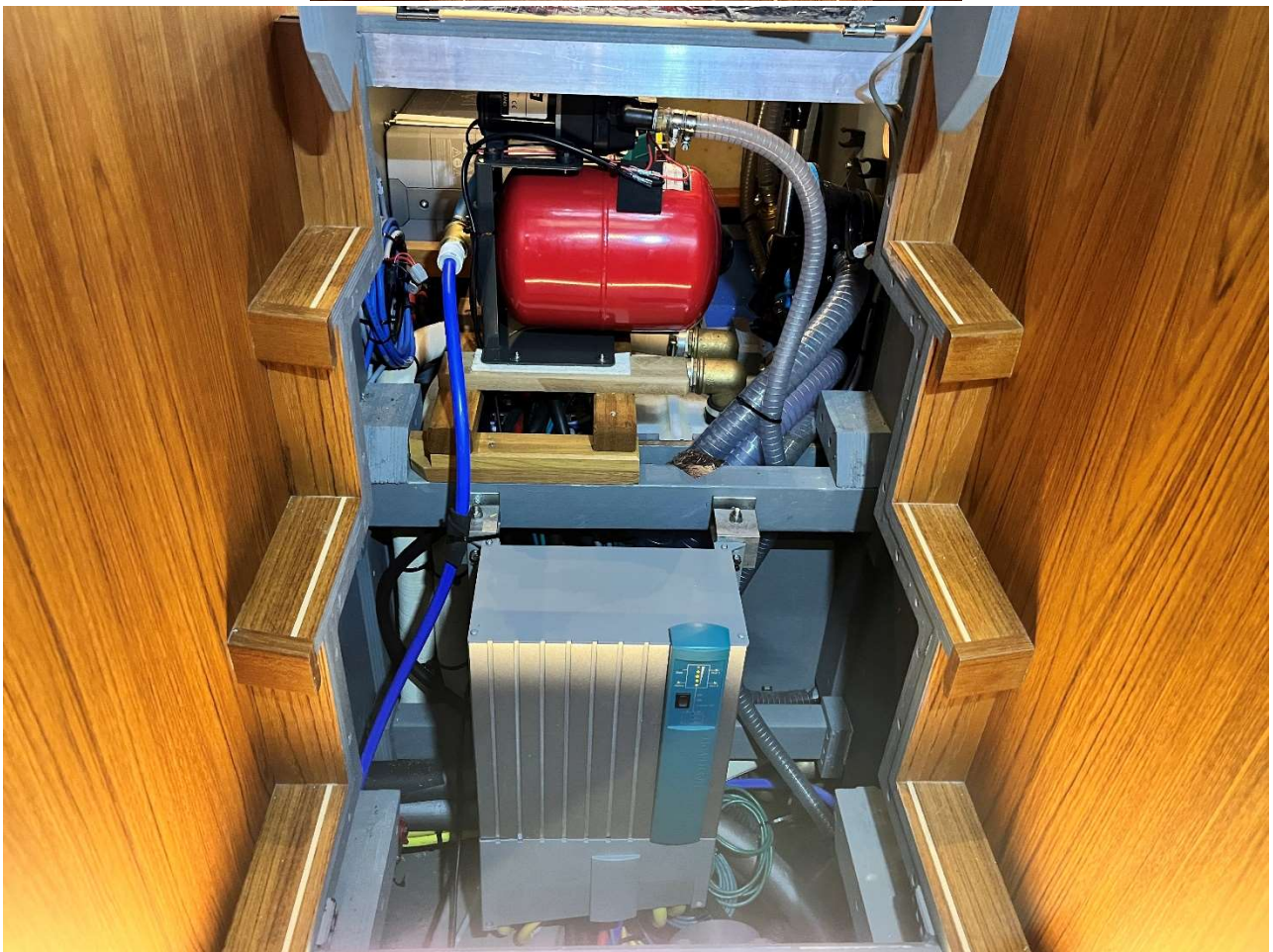
KIRCHNER & MARES

International Yacht Brokerage
Hamburg • Kiel



KIRCHNER & MARES

— International Yacht Brokerage —
Hamburg • Kiel



KIRCHNER & MARES

International Yacht Brokerage

Hamburg • Kiel



Subject to errors, prior sale, price changes and changes to the equipment list and specification. Information on dimensions, equipment or VAT are shipyard information or taken over by the owner without being checked. We assume no liability for deviations.

OFFICE KIEL

Erlenweg 16 | 24229 Dänischenhagen
Fon: +49(0)4349-91 99 30
Fax: +49(0)4349-91 99 40
mares@kirchner-mares.com

OFFICE HAMBURG

Große Bleichen 21 | 20354 Hamburg
Fon: +(0)40- 60 56 31 86
Fax: +(0)40- 180 636 92
kirchner@kirchner-mares.com

KIRCHNER & MARES INT. YACHT BROKERAGE OHG

Handelsregister Kiel HRA 7038
USt-IdNr. DE27 1597 101
info@kirchner-mares.com
www.kirchner-mares.com