

# KIRCHNER & MARES

International Yacht Brokerage

Hamburg • Kiel

## Beiderbeck 60 decksaloon with lift keel



Year: 2014

Asking Euro: 850.000,-

VAT status: paid/incl.

Engine: Volvo Penta D3-150  
110 kW / 150 hp, shaft drive

Layout: 3 cabins, 6 beds/ 2 heads

Engine hours: ca. 650 h

Length: 18,70 m

Beam: 5,35 m

Draft: 2,20 m – 3,00 m (Lifting keel)

Displacement: 22.000 kg

Fresh water: 1.000 ltr

Holding tank: 210 ltr

Fuel: 1.420 ltr

Lying: North Germany

This Beiderbeck 60 deck saloon yacht (first owner) was built by the renowned Knierim shipyard in Kiel. Simple and safe handling by a small crew and a high-quality and functional interior in combination with a lifting keel were the focus when building the yacht. Furthermore, the yacht should be safe and comfortable. The very good sailing performance was achieved through a light and torsion-resistant GRP construction with numerous carbon fiber reinforcements in the hull, deck and floor assembly, laminated in epoxy. The furling boom, the hydraulic furling systems, the "Magic Trim System" ensure easy handling under sail. A powerful engine and a bow and stern thruster are available for port maneuvers. Stored indoors every winter! Exclusively for sale at Kirchner & Mares - broker authorized by the German owner.

# KIRCHNER & MARES

International Yacht Brokerage

Hamburg • Kiel

## Various information:

The Beiderbeck 60-foot deck saloon yacht offers plenty of luxurious living space below deck in three cabins and two bathrooms. The large deck saloon panoramic windows and hull windows ensure that the deck saloon is flooded with light. The high-quality interior in high-gloss teak with oak floorboards and the many white panels ensure a friendly atmosphere in the yacht. The yacht is extensive and equipped with many extras that make life on board easier and more pleasant. The lifting keel with Cariboni hydraulics for variable draft is suitable for areas with small harbors or anchoring close to the coast.

U-shaped dinette to port around large saloon table and forward facing starboard sofa. The chart table is also installed in the direction of travel. The longitudinal pantry is located on port aft. Equipped with a: work surface in bright Corian, double sink, cool box, fridge, freezer and an electric ceramic stove from TECHIMPEX with 4 burners and integrated oven.

VOLVO PENTA D3-150 5 cylinder common rail turbo diesel with 150 hp. EVC (Electronic Vessel Control). Shaft system with Aquadrive (flexible coupling), shaft brake and 3-blade GORI folding propeller.

- Luxurious forward owner's cabin with detached double berth, sofa, extra vanity, hull windows, two deck hatches and a large walk-in closet
- Owner's bathroom on port side with separate shower cabin and electric toilet from TECMA including stainless steel holding tank with deck suction nozzle and drainage to the sea
- Two aft cabins, each with two single berths, closet, lockers, hull window, deck hatch and porthole
- Guest bathroom aft to starboard with separate shower cubicle and electric toilet from TECMA including stainless steel holding tank with deck suction nozzle and discharge to sea
- Extra technical room with workshop on starboard in the passage to the aft cabin
- Complete LED interior lighting
- Curtains for deck saloon windows and blinds for hull windows. Shades and mosquito nets for deck hatches
- Teak deck on side decks | Foredeck | aft deck | bathing platform and in the cockpit
- Electro-hydraulically folding bathing platform with integrated stainless steel bathing ladder
- Hydraulic Opacmare gangway with handrail
- Two large lockers under the quarterdeck
- Large sail load under the foredeck
- Fixed windshield with a stainless steel frame: sprayhood and cake stand (can be converted to bimini by removing the stern and side panels)
- Two fixed steering positions with JEFA stainless steel steering wheels 90 cm
- Electric retractable cockpit table in the cockpit floor

**Rigging and sails:**

- Mainsail, fully battened by NORTH-SAILS, Dyneema Sandwich (triradial), approx. 118 sqm
- NORTH-SAILS, furling genoa, Soft Norlam (triradial), approx. 166 sqm with UV protection
- NORTH-SAILS, self-tacking jib for inner forestay Dyneema Sandwich (triradial) approx. 73 sqm with UV protection
- NORTH-SAILS, Gennaker, Norlon 150 approx. 294 sqm, in the sock
- Storm jib with stay riders
  
- HALL spars, 9/10 rigged, white painted carbon fiber mast, standing rigging in rod
- White painted ROMAR Leisurefurl electric furling boom
- RECKMANN hydraulic genoa furling system
- Second forestay with hydraulic roller system from RECKMANN (self-tacking jib)
- Hydraulic boom vang and backstay adjuster with two cylinders
- Hydraulic tensioners for genoa and jib halyard
- Electro-hydraulic "Magic Trim System" for mainsheet integrated in furling boom
- Electro-hydraulic trim system for the self-tacking jib sheet
- Central Cariboni hydraulic panel in cockpit for backstay, vang, genoa and jib halyard and both forestays
- Fixed bowsprit

**Electronics and navigation:**

- 4 x service batteries from MASTERVOLT MLI Ultra 24/ 5000 Lithium
- 1x separate starter battery from EXIDE 450
- Additional alternator Alpha 24 V/ 150
- Cariboni 230V shore connection
- 3x shore power cables
- Battery charger/inverter MASTERVOLT 24 V/ 3,500 W/ 100 A
- MASTERVOLT control panel, MasterView Easy Mk II version
  
- 2 x GPS/chartplotter B&G Zeus<sup>3</sup> Touch 9 inches at the helm stations
- B&G H5000 Hydra system with 3 x H5000 multifunction displays and encoders for: Log | echo sounder | Fish finder and wind indicator
- 4 x B&G H5000 20/20 maxi display (mast mount)
- Autopilot B&G H5000 Pilot with JEFA drive
- 2 x steering compasses on the steering columns
- VHF two-way radio B&G V50 with second control unit (wireless)
- B&G H50 radar antenna and B&G 4G mounted on stern antenna mast
- AIS receiver NAIS400
- Go Free WLAN module
- R&R combination antenna HAWAII 3G

# KIRCHNER & MARES

International Yacht Brokerage

Hamburg • Kiel

## Equipment:

- Retractable bow thruster from SIDEPOWER SRV210
- Retractable stern thruster from SIDEPOWER SRV210
- Electro-hydraulic lifting keel (draft: from approx. 2.20 - 3.00 m)
- FISCHER Panda 10000i generator with separate starter battery (operating hours: approx. 28 h)
- 2 x WEBASTO diesel heaters, AirTop Evo 5500 version
- SCHENKER Watermaker 100 l/h
- Hot water boiler 60 l capacity
  
- Horn MARCO installed on the mast
- Liferaft (no current maintenance)
- JONBUOY rescue module on the pushpit (without maintenance)
- CE manual bilge pump
- 6 x electric bilge pumps
- Fire extinguisher (without maintenance)
- Automatic fire extinguishing system in the engine compartment, version SEA-FIRE
- Various cockpit cushions
- Various fenders and mooring lines
- 1 x boat hook
- 1 x Bosun's chair
- 2 x extension ropes
  
- Fusion MS-AV700 Marine Entertainment System
- with two loudspeakers in the saloon and two cockpit loudspeakers
- TV screen in the owner's cabin (electrically extendable)
- Satellite TV antenna KVH TracVision TV5 on antenna mast at the rear
- Satellite communication SAILOR 250 FleetBroadBand on antenna mast at the stern
- LED navigation lights
  
- HOLMATRO hydraulic mast jack
- LEWMAR electric windlass below deck (remote control in cockpit)
- DELTA anchor 35 kg in stainless steel
- 60 m anchor chain in 12 mm | 50 m anchor line
- Electric deck wash pump including 1x hose for the deck wash system
- Railing gates to starboard and port
- Teak seats in pushpit
  
- HARKEN 70.2STE (2-speed) electric primary winches
- HARKEN 70.3STE Electric Secondary Winches (3 Speed)
- HARKEN 70.2STE electric halyard winch (2 speed) to starboard

# KIRCHNER & MARES

International Yacht Brokerage

Hamburg • Kiel



# KIRCHNER & MARES

— International Yacht Brokerage —

Hamburg • Kiel



# KIRCHNER & MARES

— International Yacht Brokerage —  
Hamburg • Kiel



# KIRCHNER & MARES

— International Yacht Brokerage —  
Hamburg • Kiel





# KIRCHNER & MARES

International Yacht Brokerage  
Hamburg • Kiel



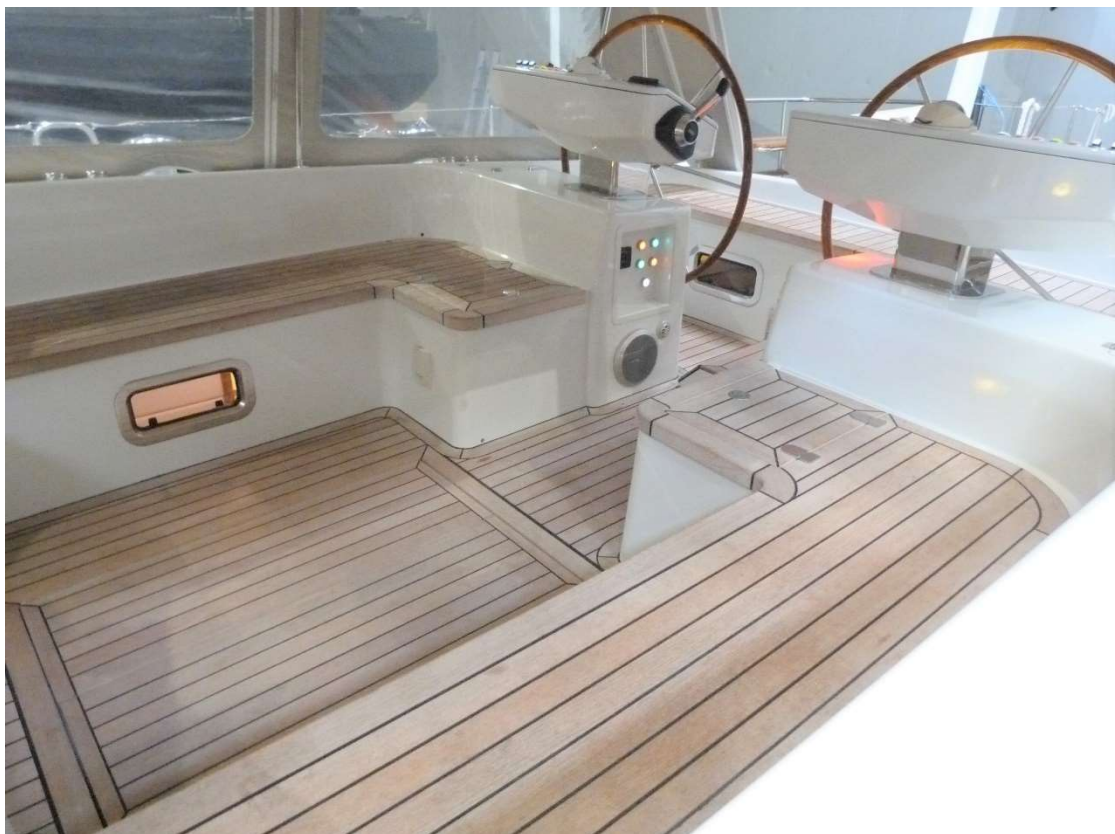
# KIRCHNER & MARES

— International Yacht Brokerage —  
Hamburg • Kiel



# KIRCHNER & MARES

— International Yacht Brokerage —  
Hamburg • Kiel



# KIRCHNER & MARES

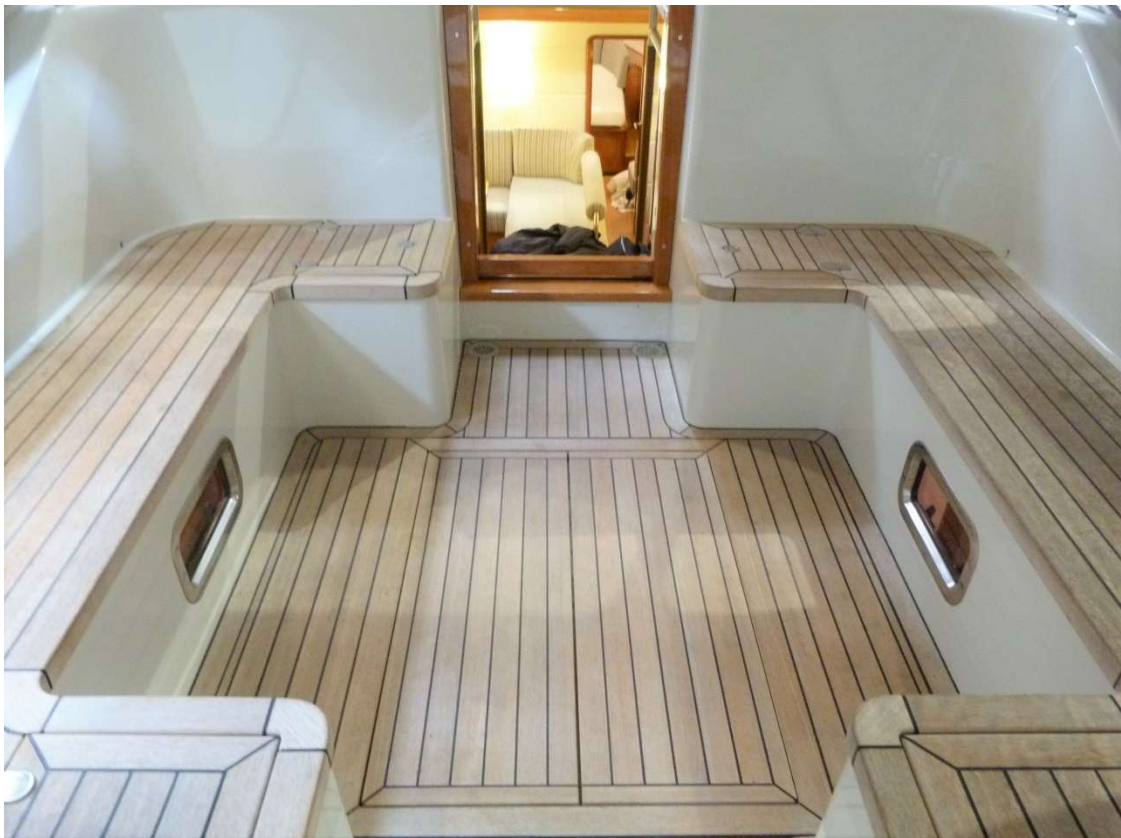
— International Yacht Brokerage —  
Hamburg • Kiel



# KIRCHNER & MARES

International Yacht Brokerage

Hamburg • Kiel



# KIRCHNER & MARES

International Yacht Brokerage

Hamburg • Kiel



# KIRCHNER & MARES

— International Yacht Brokerage —  
Hamburg • Kiel



# KIRCHNER & MARES

— International Yacht Brokerage —  
Hamburg • Kiel





# KIRCHNER & MARES

International Yacht Brokerage  
Hamburg • Kiel



# KIRCHNER & MARES

International Yacht Brokerage  
Hamburg • Kiel



# KIRCHNER & MARES

— International Yacht Brokerage —  
Hamburg • Kiel



# KIRCHNER & MARES

— International Yacht Brokerage —  
Hamburg • Kiel



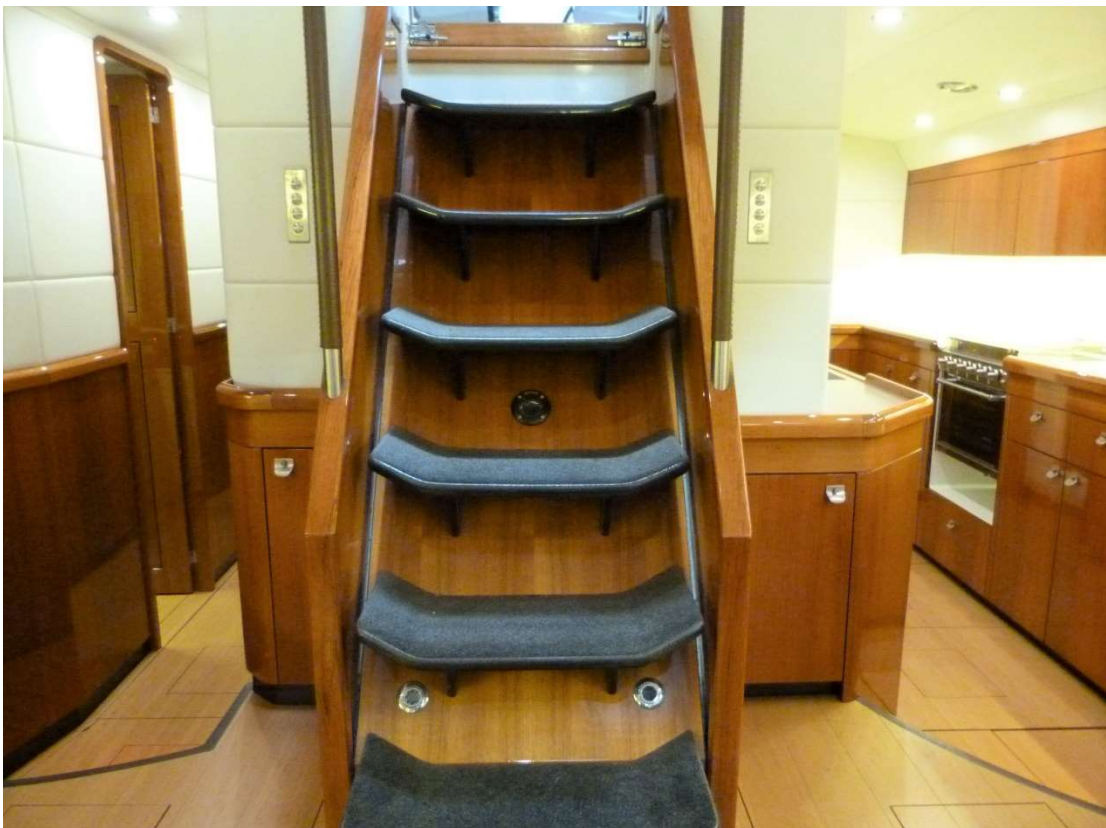
# KIRCHNER & MARES

International Yacht Brokerage  
Hamburg • Kiel



# KIRCHNER & MARES

International Yacht Brokerage  
Hamburg • Kiel



# KIRCHNER & MARES

— International Yacht Brokerage —  
Hamburg • Kiel



# KIRCHNER & MARES

International Yacht Brokerage  
Hamburg • Kiel





# KIRCHNER & MARES

— International Yacht Brokerage —  
Hamburg • Kiel



# KIRCHNER & MARES

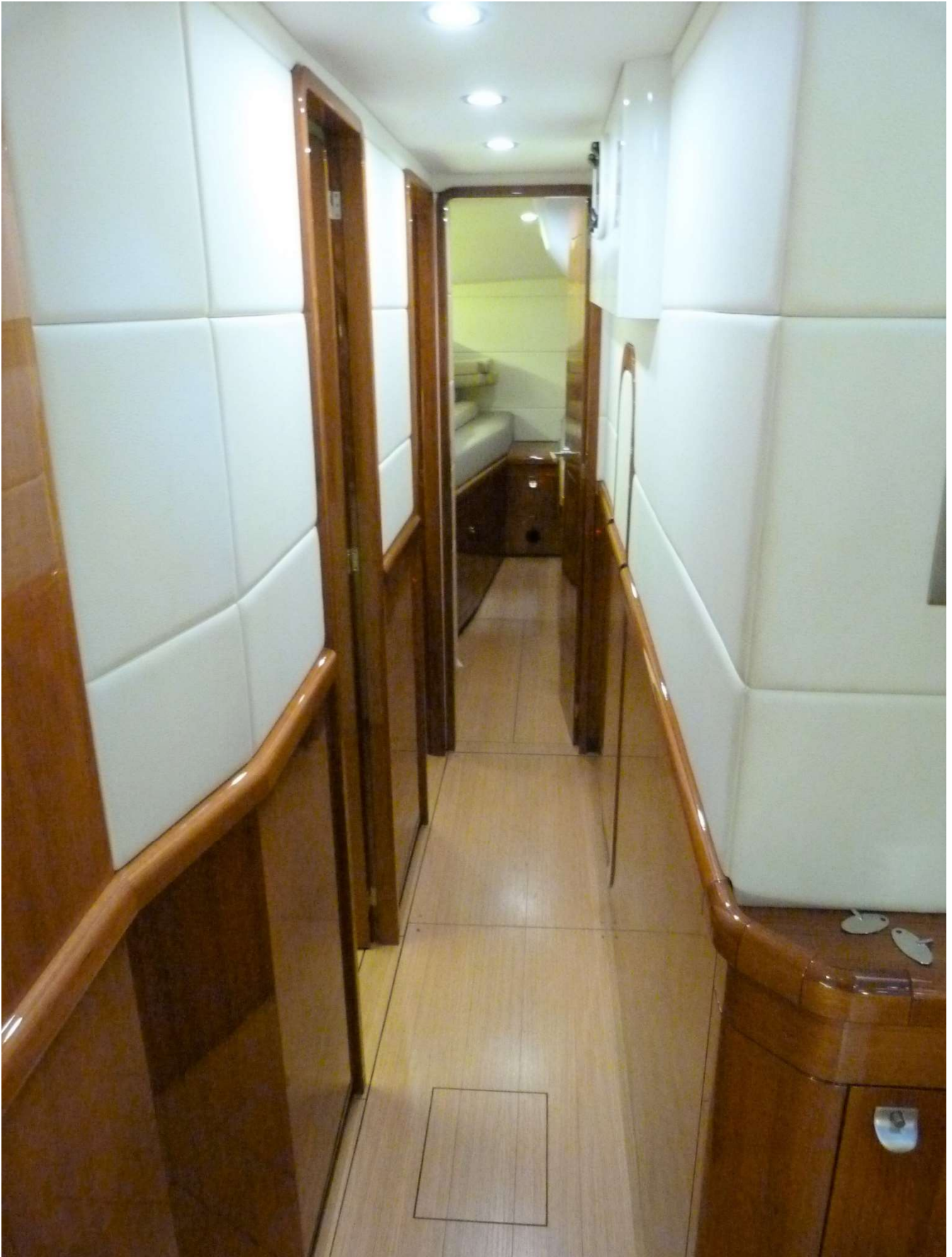
— International Yacht Brokerage —  
Hamburg • Kiel



# KIRCHNER & MARES

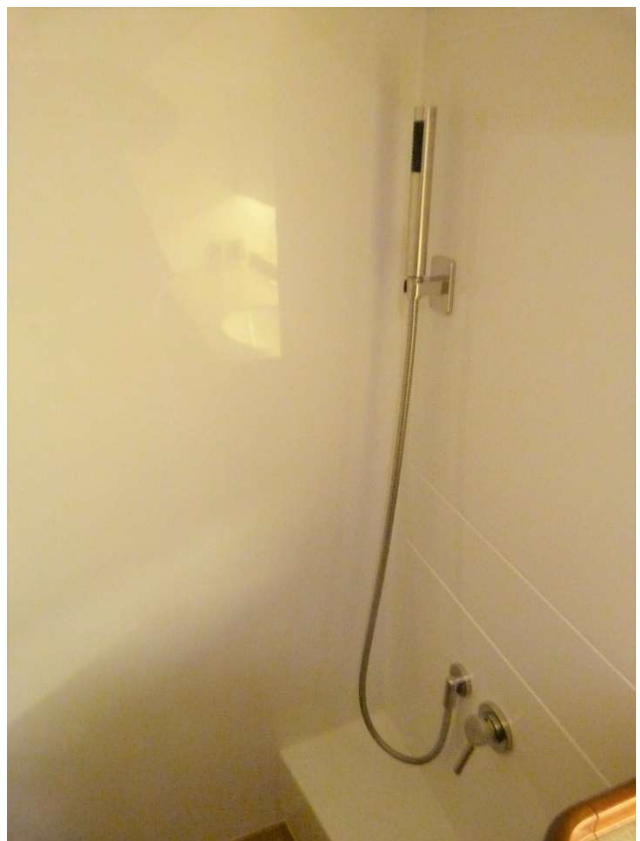
— International Yacht Brokerage —

Hamburg • Kiel



# KIRCHNER & MARES

International Yacht Brokerage  
Hamburg • Kiel



# KIRCHNER & MARES

International Yacht Brokerage  
Hamburg • Kiel



# KIRCHNER & MARES

International Yacht Brokerage  
Hamburg • Kiel



# KIRCHNER & MARES

International Yacht Brokerage  
Hamburg • Kiel



# KIRCHNER & MARES

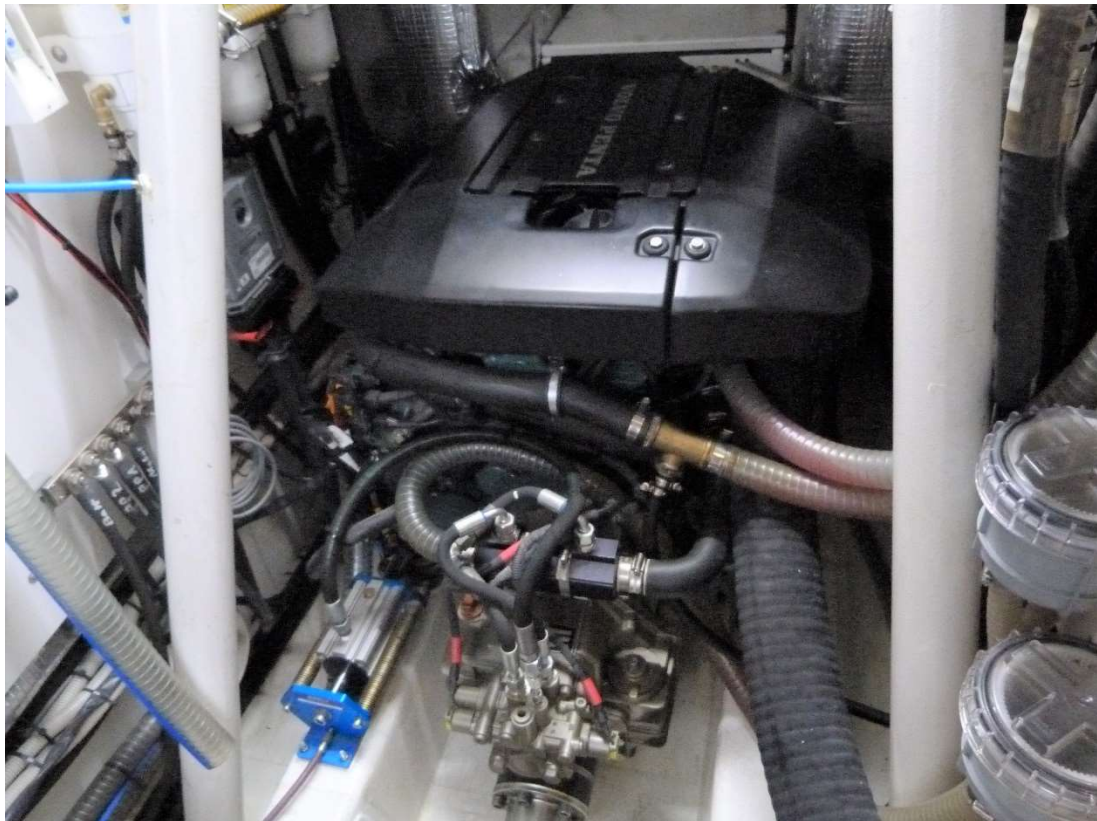
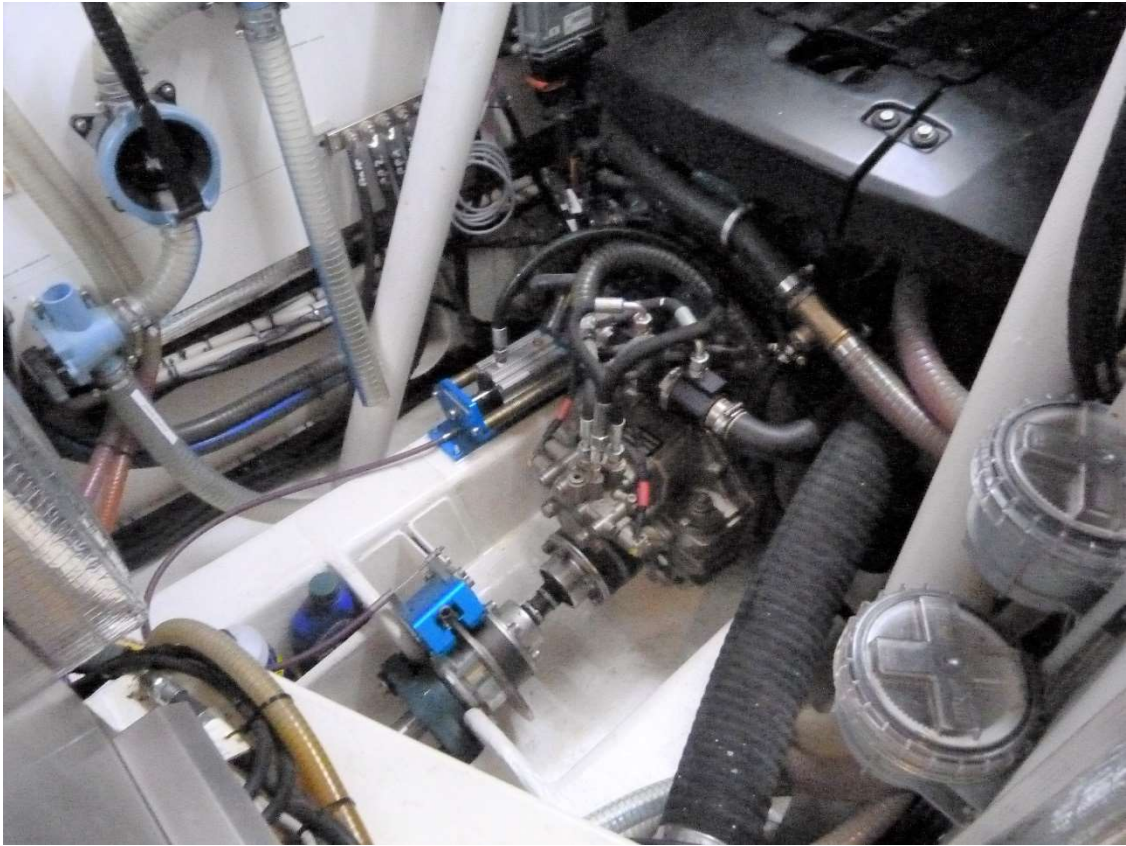
International Yacht Brokerage  
Hamburg • Kiel





# KIRCHNER & MARES

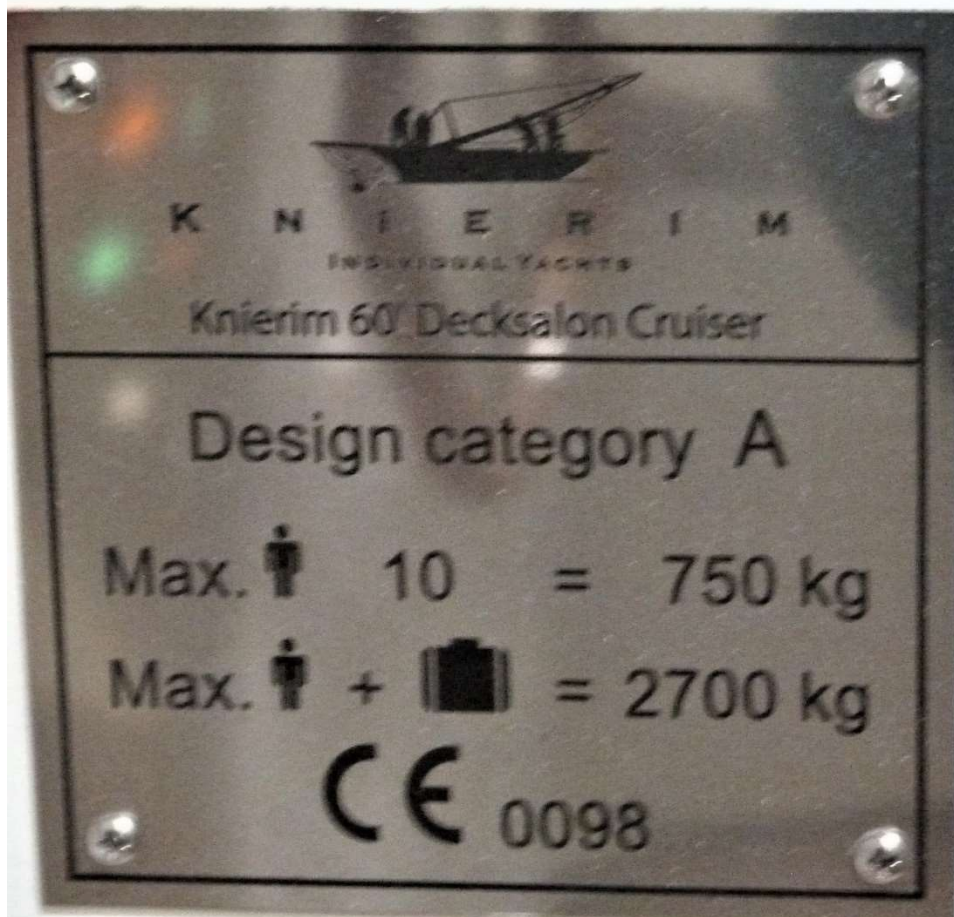
— International Yacht Brokerage —  
Hamburg • Kiel



# KIRCHNER & MARES

International Yacht Brokerage

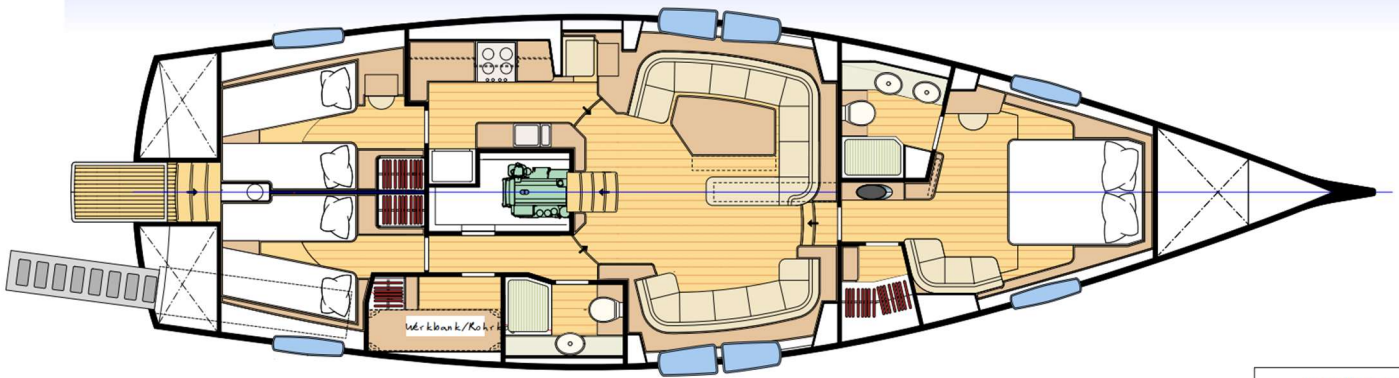
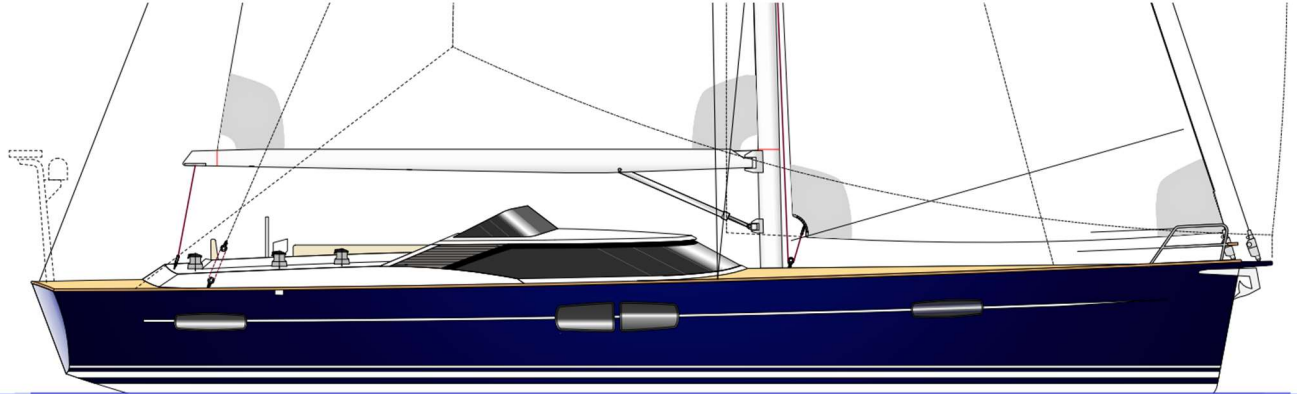
Hamburg • Kiel



# KIRCHNER & MARES

International Yacht Brokerage

Hamburg • Kiel



KNIERIM 60

beiderbeck 3 designs

Yacht Design - Interior Design - Naval Architecture



# KIRCHNER & MARES

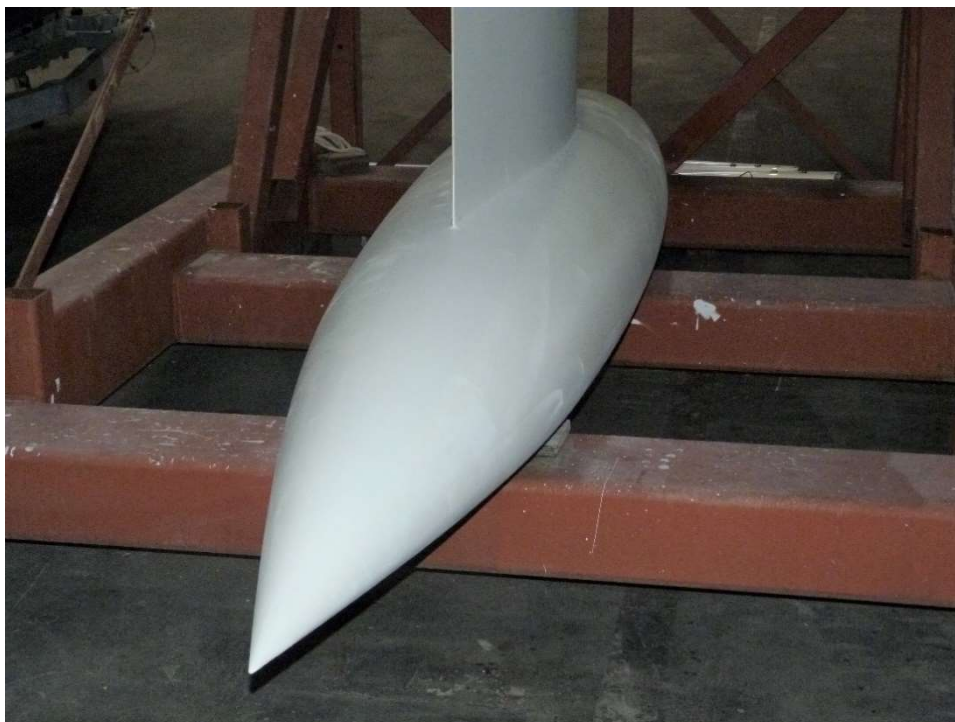
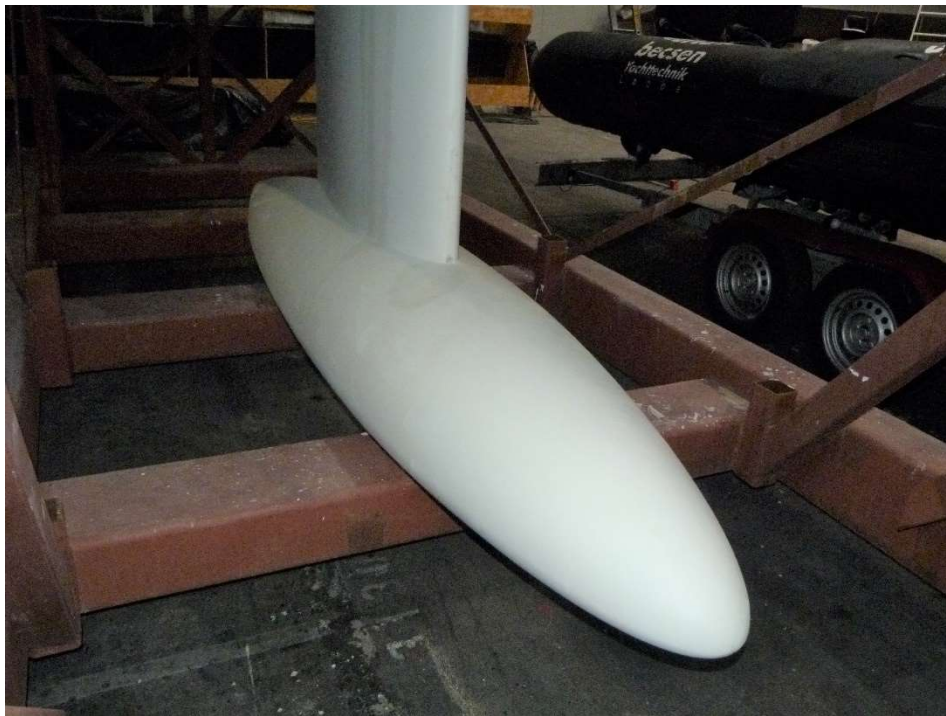
— International Yacht Brokerage —  
Hamburg • Kiel



# KIRCHNER & MARES

International Yacht Brokerage

Hamburg • Kiel



**Subject to errors, prior sale, price changes and changes to the equipment list and specification. Information on dimensions, equipment or VAT are shipyard information or taken over by the owner without being checked. We assume no liability for deviations.**

#### OFFICE KIEL

Erlenweg 16 | 24229 Dänischenhagen  
Fon: +49(0)4349-91 99 30  
Fax: +49(0)4349-91 99 40  
mares@kirchner-mares.com

#### OFFICE HAMBURG

Große Bleichen 21 | 20354 Hamburg  
Fon: +(0)40- 60 56 31 86  
Fax: +(0)40- 180 636 92  
kirchner@kirchner-mares.com

#### KIRCHNER & MARES INT. YACHT BROKERAGE OHG

Handelsregister Kiel HRA 7038  
USt-IdNr. DE27 1597 101  
info@kirchner-mares.com  
www.kirchner-mares.com